

Field #48  
Book  
See page 37

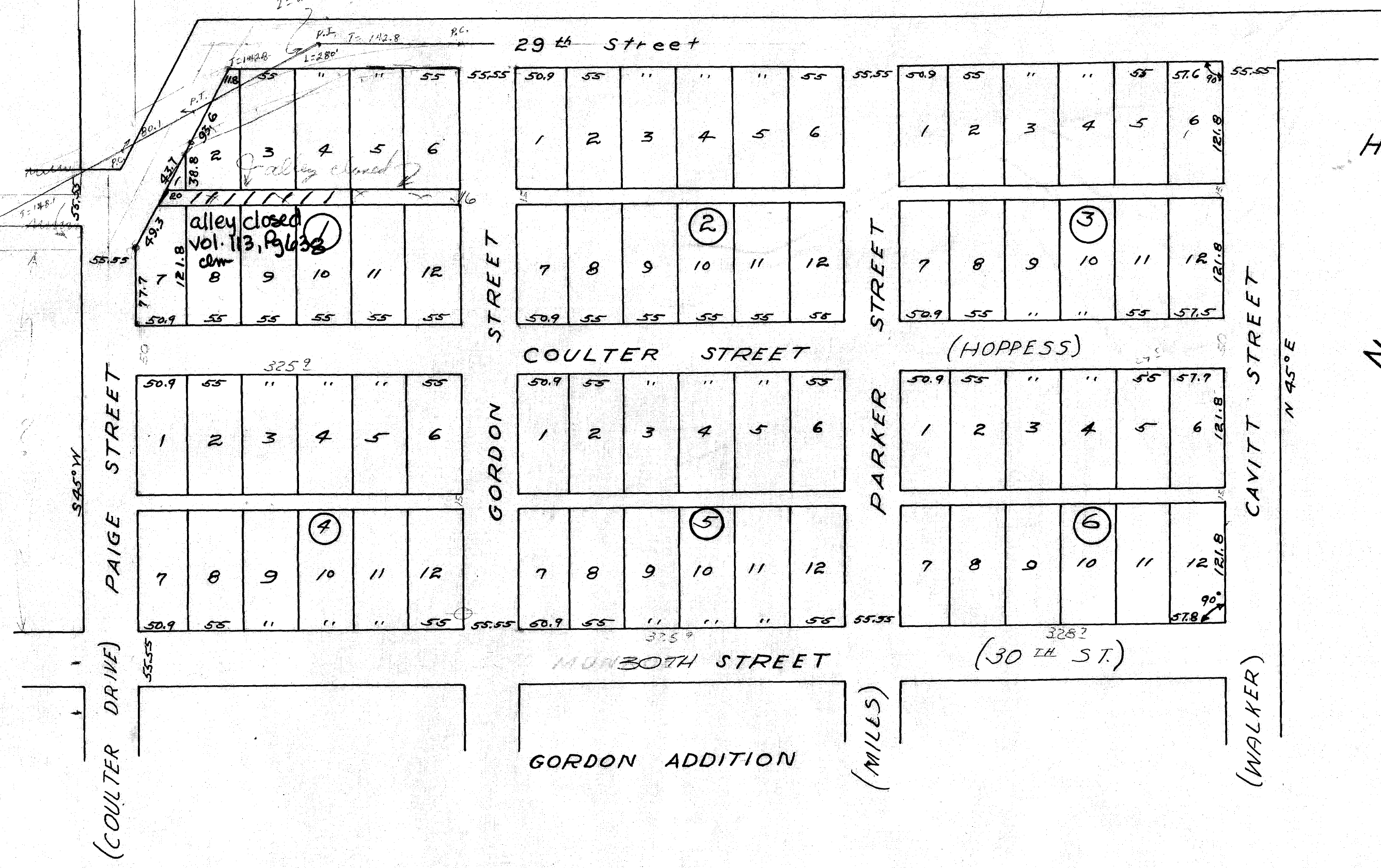
275  
507  
225.91

572  
275  
288

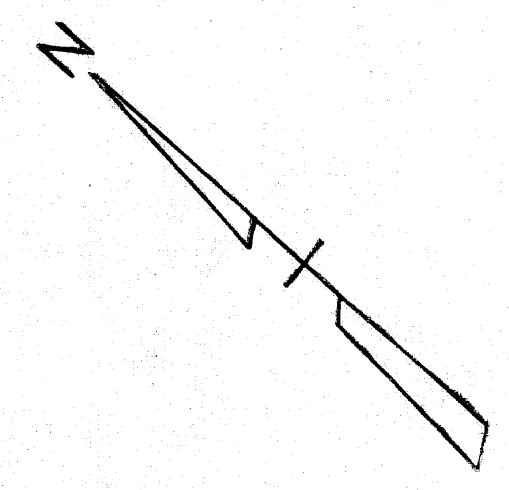
on base  
9/25/00 ud

R=573.0  
D=119°

D=10°  
I=28°  
R=573'



HOPPESS ADDITION  
TO  
THE CITY OF BRYAN  
D.R. 90 Pg. 587 27-2-36  
Scale: 1"=100'



GORDON ADDITION

(MILES)

(WALKER)

MUNBOTH STREET

(30th ST.)

COULTER STREET

(HOPPESS)

29th Street

PAIGE STREET

GORDON STREET

PARKER STREET

CAVITT STREET

N 45° E

(COULTER DRIVE)